

## INSTALLATION INSTRUCTION

### UNDERGROUND LIGHT

#### TECHNICAL DATA:

MODEL	VT-1161
WATTS	1W
BEAM ANGLE	90°
CUTTING SIZE	Ø43mm
BODY TYPE	PC + AL
DIMENSION	Ø60x93mm
INPUT POWER	DC:12V



**2** YEARS  
**WARRANTY\***



#### INTRODUCTION & WARRANTY

Thank you for selecting and buying V-TAC product. V-TAC will serve you the best. Please read these instructions carefully before starting the installation and keep this manual handy for future reference. If you have any another query, please contact our dealer or local vendor from whom you have purchased the product. They are trained and ready to serve you at the best. The warranty is valid for 2 years from the date of purchase. The warranty does not apply to damage caused by incorrect installation or abnormal wear and tear. The company gives no warranty against damage to any surface due to incorrect removal and installation of the product. The products are suitable for 10-12 Hours Daily operation. Usage of product for 24 Hours a day would void the warranty. This product is warranted for manufacturing defects only.

#### WARNING!

1. Please make sure to turn off the power before starting the installation.
2. Installation must be performed by a qualified electrician
3. The light source of this luminaire is not replaceable; when the light source reaches its end of life the whole luminaire shall be replaced.
4. The lighting should be located in dry area.

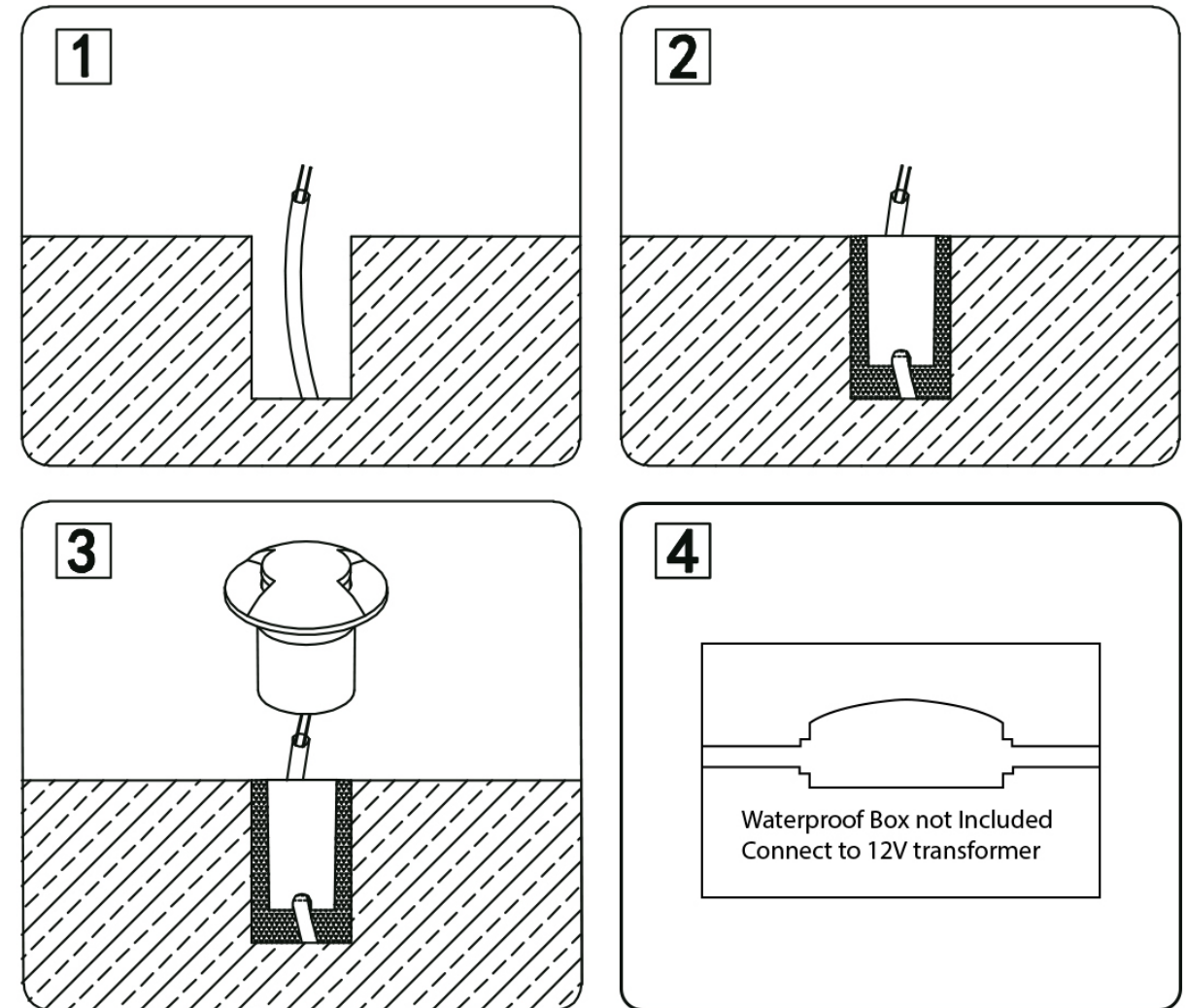


This marking indicates that this product should not be disposed of with other household wastes.



Caution, risk of electric shock.

#### INSTALLATION DIAGRAM:



#### INSTALLATION INSTRUCTION

1. Switch off the power before starting the installation.
2. Connect the supply leads with a 12V DC Power supply ( Power supply and waterproof terminal box not included).
3. Fix the lamp body on the ground.
4. Switch on and test.

IN CASE OF ANY QUERY/ISSUE WITH THE PRODUCT, PLEASE REACH OUT TO US AT: [SUPPORT@V-TAC.EU](mailto:SUPPORT@V-TAC.EU)  
 FOR MORE PRODUCTS RANGE, INQUIRY PLEASE CONTACT OUR DISTRIBUTOR OR NEAREST  
 DEALERS. V-TAC EUROPE LTD. BULGARIA, PLOVDIV 4000, BUL.L.KARAVELOW 9B