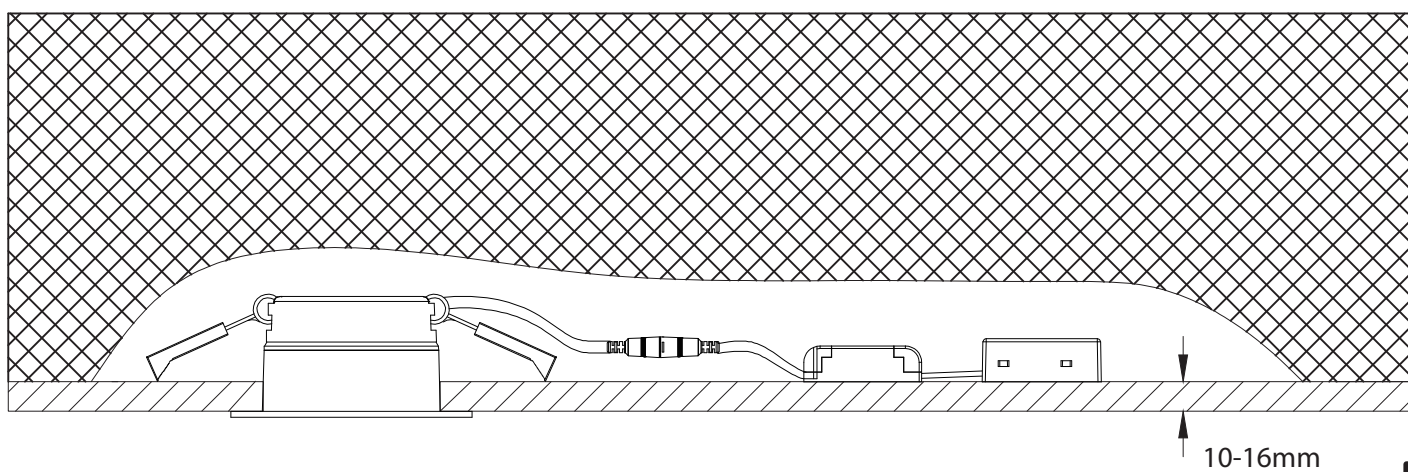
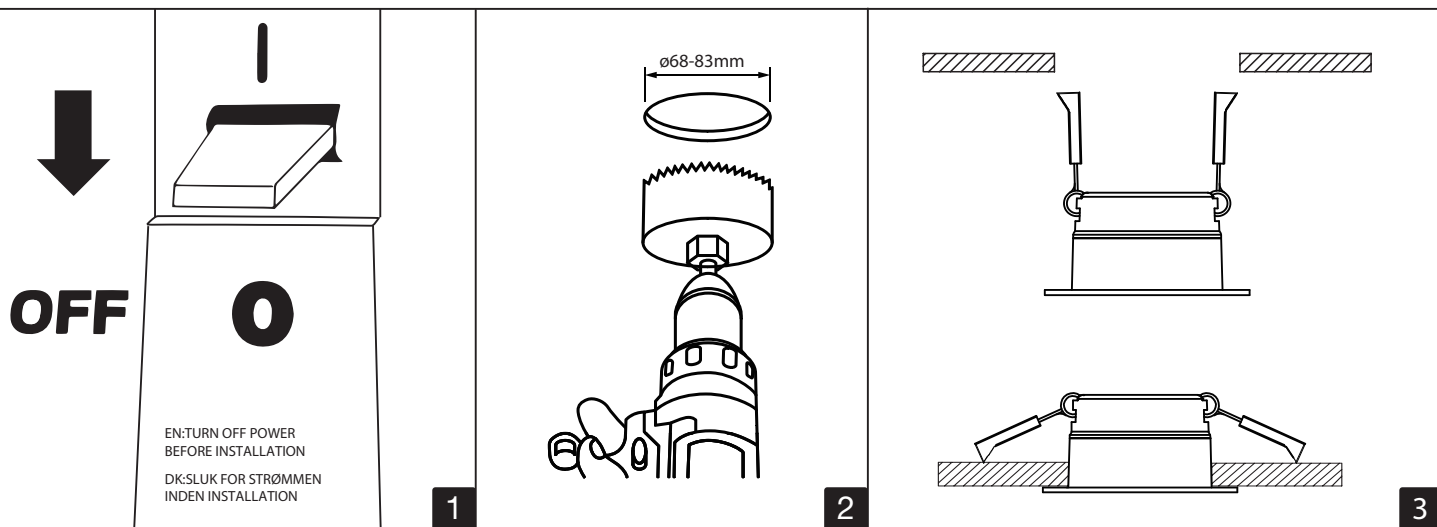
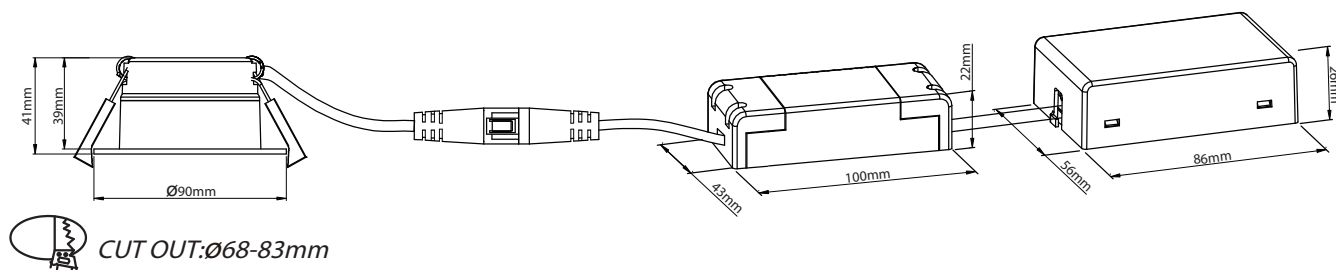


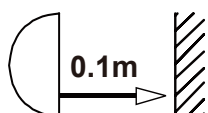
HiluX

DS8 Tilt360 DOWNLIGHT



EN: Minimum distance to flammable material in the beam direction.

DK: Minimum afstand til brandbart materiale fra lyskeglen.



EN: Only to be installed by an authorized electrician.
DK: Må kun installeres af en autoriseret elektriker.

HiluX LED ApS
Michael Drewsens Vej 12, DK-8270 Højbjerg



User manual excerpts



1. Download Shelly Smart Control application

Your device can be controlled remotely using the Shelly Smart Control mobile application.

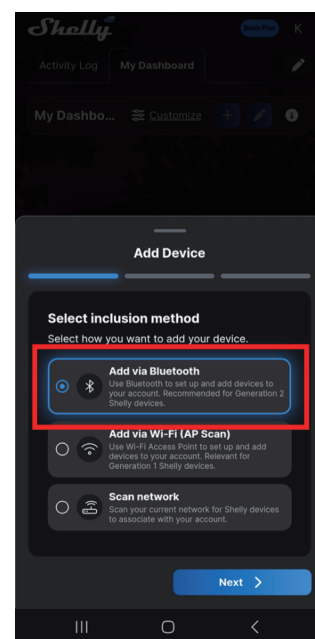
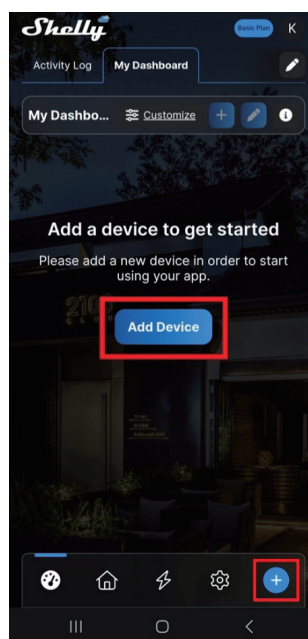
To install the application, scan the QR code below, or search for "Shelly Smart Control" in App Store, AppGallery, or Google Play to install.

The mobile application is free to download, and you will need to create a free account to start using it.



2. Add your device to Shelly Smart Control

1. Open your Shelly Smart Control app.
2. Tap on the Add Device button if this is the first device you are adding.
If you already have devices added to your account, tap on the plus sign at the bottom right corner of the screen.
3. Select Add via Bluetooth.
4. Tap Next to continue. A list of supported devices appears.
5. Select the device you want to add and tap Next.
6. When asked, enter your Wi-Fi network credentials and tap Add device.
7. Wait until your app finishes adding the device; it might take a few minutes.
After the process is completed, a success message appears.
8. Enter a name for your device and select its picture; tap Next.
9. Select a room for the device to be added to or create a new one by tapping the Add room button.
10. Tap Save. The device has been added to your account.



3. Easy pairing with a Shelly BLU device

1. When Hilux is turned on, it starts searching for BLU remotes for 30 sec, with no visible indications.
A Shelly RC Button 4 or Shelly BLU wall switch must be put in Pairing mode by pressing any of its buttons 4 times.
Its LED indicator starts flashing in blue and the device enters Bluetooth pairing for one minute.
2. Click on a button on the remote. When the remote is found, Hilux will blink two times for confirmation.
3. On the remote, select the pair of buttons you want to use to control the Hilux, then press one of them.
If the assignment is successful, the Hilux will blink three times, indicating that the procedure is complete.
4. Now you can turn Hilux on and off from the remote, and you can dim up or down by holding down the respective keys on the remote.

4. Factory reset

The steps to reset a Hilux device to its factory settings via power cycle include turning the device off and on five consecutive times. When the procedure is successfully completed, Hilux will blink a couple of times, reset all settings and configurations and turn on again with its default settings – 4600K @ 50% brightness.

Example:

1. Turn Hilux off → Turn Hilux on for 2-3 sec.
2. Turn it off → Turn it on for 2-3 sec.
3. Turn it off → Turn it on for 2-3 sec.
4. Turn it off → Turn it on for 2-3 sec.
5. Turn it off → Turn it on and wait.
6. Hilux device blinks few times, resets all settings and configurations, and then turns on with its factory settings.