



Meaningful Innovation.

WEEE Number: 80133970

INSTRUCTION MANUAL

LED SPOT LIGHT

TECHNICAL DATA

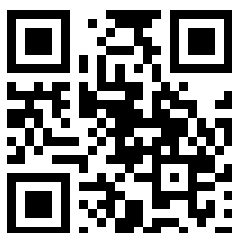
MODEL	VT-1018
SKU	10301, 10302, 10303
MAX. WATTS	18W
LUMENS	1900 Lm
COLOUR TEMPERATURE	4000K
BEAM ANGLE	34°
CRI	>80
LONG LIFE	20,000 Hours
ON/OFF CYCLE	>15,000
INPUT POWER	AC: 220-240V, 50Hz
PROTECTION RATING	IP20
MATERIAL	Aluminium
UNIT COLOUR	BLACK
DIMENSION	78x Ø63x Ø50mm



02 YEAR
WARRANTY*

INTRODUCTION & WARRANTY

Thank you for selecting and buying V-TAC product. V-TAC will serve you the best. Please read these instructions carefully before starting the installation and keep this manual handy for future reference. If you have any other query, please contact our dealer or local vendor from whom you have purchased the product. They are trained and ready to serve you at the best. The warranty is valid for 2 years from the date of purchase. The warranty does not apply to damage caused by incorrect installation or abnormal wear and tear. The company gives no warranty against damage to any surface due to incorrect removal and installation of the product. The products are suitable for 10-12 Hours Daily operation. Usage of product for 24 Hours a day would void the warranty. This product is warranted for manufacturing defects only.



MULTI-LANGUAGE MANUAL QR CODE

Please scan the QR code to access the manual in multiple languages.

In case of any query/issue with the product, please reach out to us at: support@v-tac.eu
For More products range, inquiry please contact our distributor or nearest dealers.
V-TAC EUROPE LTD. Bulgaria, Plovdiv 4000, bul.L.Karavelov 9B

INSTRUCTIONS FOR THE LIGHT

- Please make sure to turn off the power before starting the installation.
- Installation must be performed by a qualified electrician.
- The light source of this luminaire is not replaceable; when the light source reaches its end of life the whole luminaire shall be replaced.
- If the external flexible cable or cord of this luminaire is damaged, it shall be exclusively replaced by the manufacturer or his service agent or a similar qualified person in order to avoid a hazard.
- For Indoor use only

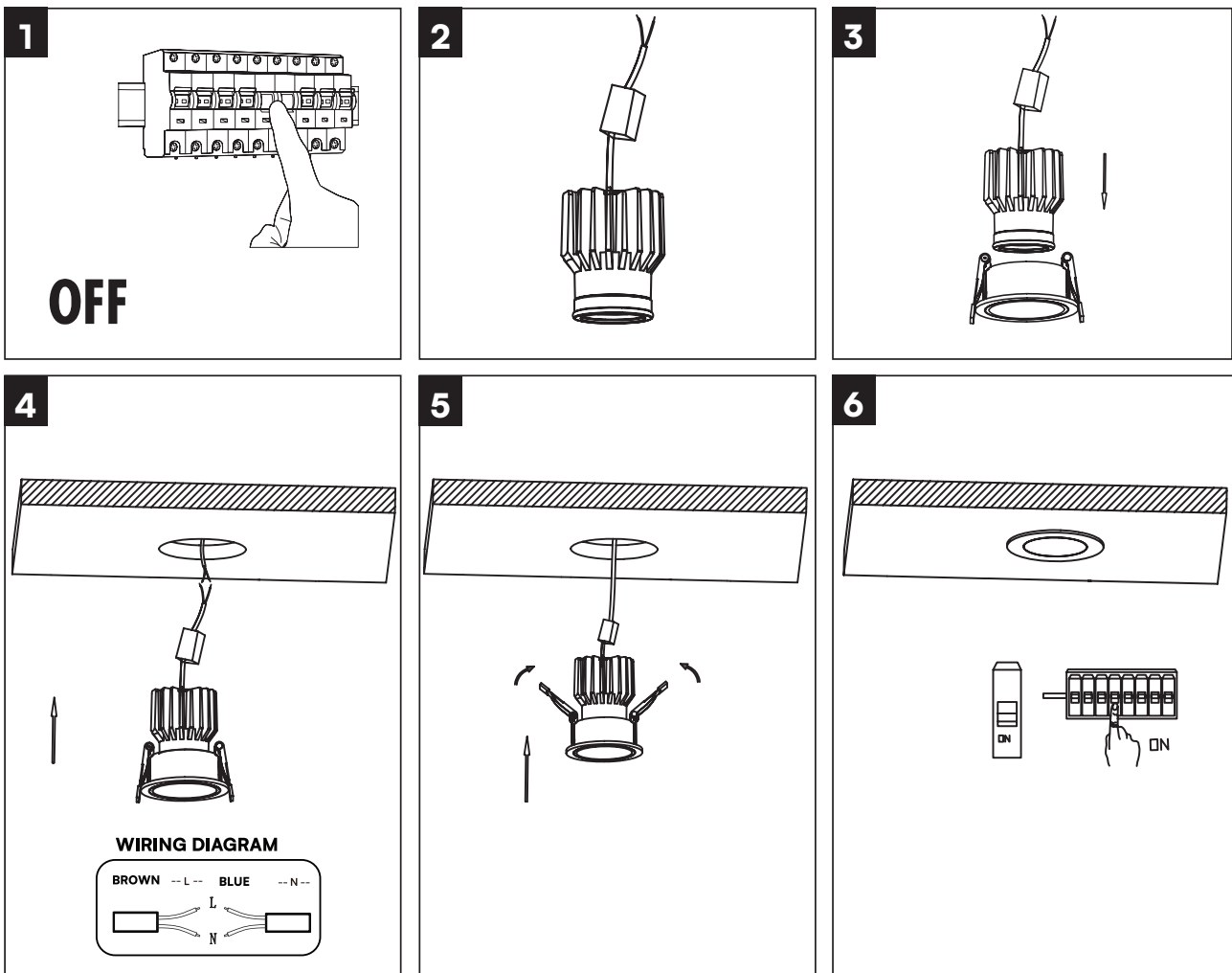


This marking indicates that this product should not be disposed of with other household wastes.



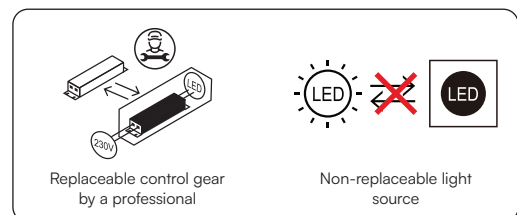
Caution, Risk of electric shock

INSTALLATION DIAGRAM



INSTALLATION INSTRUCTIONS

1. Turn Off the power.
2. Install the spotlight into the fitting. (Figure 3)
3. Connect the driver with AC connection. (Figure 4)
4. Up right the spring and put the fitting into the hole.
5. Switch on and test.



RoHS



UK
CA

